

# Along the way with G.C. Myers

*Thanks to the painter's 48 acrylics, the glowing and glorious elements of fall can be displayed indoors at the Kada.*

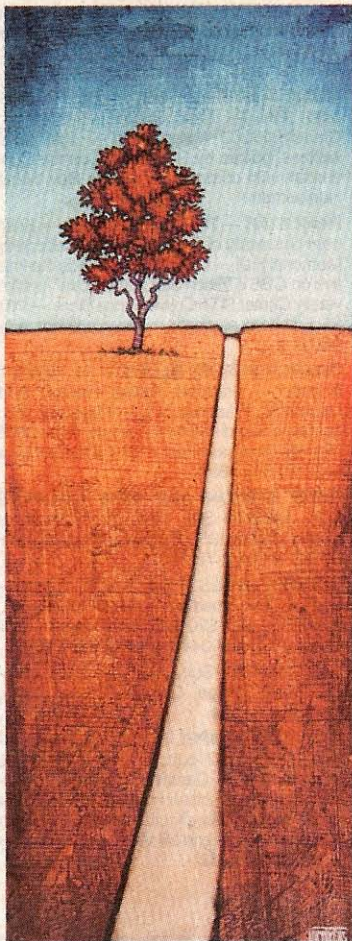
**REVIEW** by Karen Rene Merkle  
Contributing writer

This is the most visually powerful time of year in our area. The sky is never bluer, the landscape never more colorful, the light never more intense than during autumn in northwestern Pennsylvania.

How clever, then, of Kathy and Joe DeAngelo of the Kada Gallery to feature an exhibit that brings all those glowing and glorious elements indoors.

"Along the Way" is more than just a treat for the eyes, however. It's a self-help course, a philosophical exploration, a Zen experience. Painter G.C. Myers employs uncomplicated, identifiable imagery to represent universal truths. See this collection of 48 new acrylics at the gallery before it closes on Nov. 11.

Myers calls his works "internal landscapes," an ingenious description seeing as how the pathways, trees, islands, and other geographical landmarks combine to represent our own personal journeys through life. He has a two-pronged approach to his message, implications that are straightforward, hardly revolutionary, but ones we need to hear from time to time.



Myers' 'Spirit Guide'

On one hand, almost every piece incorporates a road winding off into the distance, giving tantalizing glimpses of what lies ahead and leading the viewer onward. On the other hand, his focus on what surrounds those paths — trees, rocks, houses, hillocks — emphasize his belief in the importance of enjoying the journey, of noticing even the simplest sights along the way.

These paintings are the ultimate in optimism. Not only is there something worth moving toward, there's much that's good and valuable already around us. It's a forceful message that always bears repeating. And you can't help but be enchanted by the artist's tactile application of paint, his stylized forms, and a palette that will never be called timid.

His affinity for rich tones — some deep blues and purplish hues but most often rich autumnal shades of red, gold, and orange — means the entire gallery has taken on an unnatural luminosity.

Myers' trademark presentation adds to that impression: Each piece is identically mounted in a simple mitered golden-orange wooden frame. Myers also uses wide white matting to his advantage, a technique that makes each painting pop out even more dramatically.

THERE ISN'T A BAD VIEW IN THE gallery. His "In the Window" series are scenes-within-scenes.

But it's his more traditional landscapes — traditional in the sense that they are landscapes not viewed secondhand through a

window — that dominate the collection.

One of the most popular pieces in the exhibit is "Elevated," in which a single red-leaved tree stands on a blue hill against a marigold-colored sky.

"I think this piece is about living one's life at a higher level," Myers said, "about letting go of pettiness, envy, and other negative emotions, and living in a positive light."

While there is no overtly anti-social message attached to any of Myers' paintings, one definitely gets the sense that the artist sees life as the ultimate solo flight. And he's right — we can support one another, help each other as much as we can, yet in the end each of us has to come to terms with where we are and where we're going.

All Myers can do is have us enjoy the journey, and prepare for what's to come with a certain sense of hopefulness.

"I, like many others, believe that life is a journey," he said. "We all move forward each day, all on our own chosen paths. But too often, we focus on where we're headed ... rather than pausing for a time to notice the sights and moments along the way."

During your journey, you could do much worse than to spend a few moments reflecting on what Myers has to say.

**'Along the Way'** — 48 acrylic paintings by G.C. Myers — is on view through Nov. 11 at the Kada Gallery, 2632 W. Eighth St. Gallery hours: Mon-Fri from 10 a.m.-5:30 p.m., Sat from 10 a.m.-4:30 p.m. Call 835-5232.